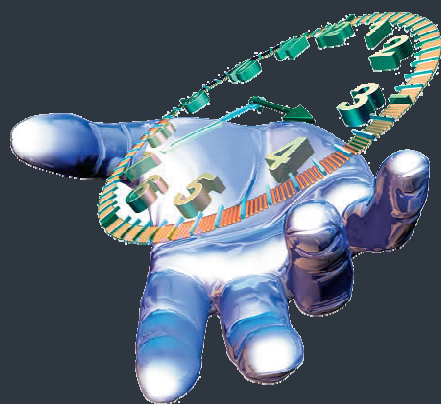




Hillman Time Systems
simplifying **Data Collection**



Hillman Time Systems TRAX Data Collection

Time & Attendance Terminals

Description

TRAX is a family of data collection terminals designed to satisfy your need to monitor the activities of your entire workforce, providing you with full attendance recording and even access control capabilities in offices, factories, hospitals and other work sites. All standard communication and Auto ID technologies are offered incorporated in different versions of the TRAX terminal.

Overview

- **Easy to Use** — TRAX terminals meet the growing demand for easy interfacing to existing LAN's or WAN's, which are nowadays considered commonplace in both the industrial sector and in all office applications.
- **Best price / performance ration—** Easily installed and configured, the TRAX terminal is without question of the most cost-effective data collection solutions available today.

Main Features

- Integrated Ethernet/IP Interface with POE (Power over Ethernet) Support. Allows the simplest installations.
- Internal magnetic, barcode, or proximity (RFID) card readers.
- Time & Attendance and Access Control firmware included.
- Compact elegant design, appreciated when space saving is important such as on a work bench or in a reception area.
- Robust, splash/dust proof ABS casing, IP65 (except barcode version).
- Mounting, maintaining and moving the terminal is made easy thanks to the special bracket supplied with the terminal and thanks to its connector block.
- Automatic programmable shut-down in the event of a power supply failure. The terminal can retain its data for two months. The battery ensures up to six hours functioning time Auto-shutdown is programmable to turn off the terminal after a user-specified number of minutes



Hillman Time Systems

TRAX Data Collection

Functionality

TRAX terminals contain the standard Attendance & Recording/Access Control firmware found in PROX+F/G terminals, which allow you to:

- Validate transactions by user group and time zones.
- Allocate description codes for different transactions.
- Record the attendance of a non card holder under the authorization of a supervisor.
- Review all the transactions of a single user.
- Display messages and data prepared by the controlling computer.



You can define a vast variety of interactive, event driven data collection transactions: the correctness of data can be checked by means of prompts to the user and data validation tables. The user can configure TimeTrak to configure the terminal to activate a relay when a transaction occurs.

Additional Features

- **Benefit Accrual Look-up**
Employee's can view taken / available benefit time.
- **Hours worked review**
Employee's can view their hours worked.
- **Schedule Verification**
Employee schedules can be downloaded to prevent "early clock IN's".
- **Instant Punch Review**
Punches are instantly sent to the software to be viewed.
- **Name Display**
Employee names are displayed while transacting.
- **Programmable Display Prompts**
"Soft keys" allow full customization of prompts.
- **Bell Relay**
Internal relay can be programmed to signal lunches & breaks
- **Punch Review**
Employee's can view their weekly punches at the terminal.