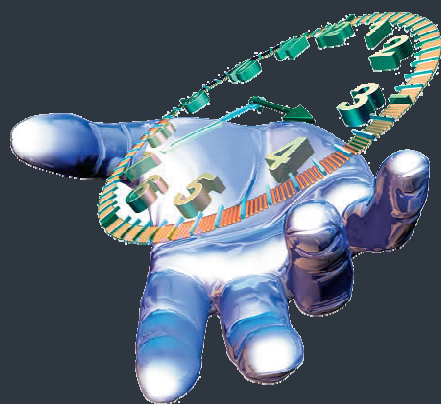




Hillman Time Systems
simplifying **Data Collection**



Hillman Time Systems

BIO-100 Fingerprint Terminal

Cost Effective Biometric Solutions

Description

Breakthrough Technology finally makes data collection simple, fraud-proof and cost effective with the BIO400 Ethernet Biometric Identification Data Collection Terminal.

Use Biometric Identification Where Needed to Eliminate Problems and Costs

Overview

These hardware solutions eliminate problems with lost or forgotten badges while also eliminating the high costs for badges and the associated labor to produce and distribute them.

Because all employees carry their unique IDs with them, **you eliminate the possibility of buddy punching** - employees punching or swiping in for each other.

Main Features

The Finger Scanner Biometric terminal is easy to use. Employees may enroll multiple fingers providing immediate alternatives should a finger become deeply cut and not identifiable.

Reliable quality tested technology permits us to offer "Vandalism Insurance" at \$100 annually (for units on annual maintenance) guarantees free replacements for any failure, even when intentionally damaged.

And there's more.

- Stores up to 1000 Employees Finger Signatures & 50,000 Transactions
- Verification time: Less Than Two Seconds (Under One Second Typical)
- Built-in Ethernet TCP/IP Communications - Just Connect to Your Network or PC
- Automatic Time Synchronization via Network
- Operating Temperatures: 32F to 110F
- Operating Humidity: 20% to 80%
- Size: 8.5" Wide x 7" High x 2" Depth



Hillman Time Systems

BIO-100 Fingerprint Terminal

Functionality

The BIO-100 is a cost-effective time & attendance terminal, providing small to mid-size companies the ability to use fingerprint biometrics to automate time & attendance functions, eliminate buddy punching and reduce the costs and risks associated with employee ID cards.

The BIO-100 delivers companies a rapid return on their investments. This product is designed for small businesses requiring a simple and cost-effective alternative to more sophisticated workforce management and data collection devices. Savings are realized through the reduction of payroll costs, and elimination of "buddy-punching" which could be costing thousands of dollars a year.



Additional Features

User Capacity

1000 fingerprints, standalone storage 50000 records

Algorithm Version

2005 Version ZK multi-engine Biokey algorithm

Verification

1:1, fingerprint only, ID number+fingerprint, ID number+ code

Fingerprint Parameter

Identification time<=2, FAR<=0.0001%,FRR<=1%

Communication

TCP/IP

Display, Voice and Keyboard

Four lines blue LCD, double color LED indicator light

Power Supply

12V DC, watchful waiting current<50 mA, working current<400mA

Sensor

U.are.U sensor

Operating Environment

Temperature 32°F-113°F (0°C-45°C)

Humidity 20%-80%

Size

8.5w x 7h x 2d in

(216w x 178h x 51d mm)